



*EHMKI, SCHMID & CO.  
MECHANISCHE SYSTEME GMBH*



**SAFE  
DESK** 

## PRODUCT NEWS

Modern communication workplaces must offer the maximum possible security for the soft and hardware used. SAFE desk meets these extensive requirements:

- Security against unauthorised access to the IT-controlled systems. The keyboard and PC monitor can be retracted and locked into the desk. The separate PC container under the surface of the desk is also lockable, thus preventing unauthorised access.
- Operating safety is guaranteed with ordered cable management. All subsystems such as power supply units, distributors and power adaptors are housed in the lockable substructure. All data and network cables are placed touch-proof inside the substructure.
- Future-proof: future expansions such as changes of equipment model are easy to implement and thus provide planning security. Likewise, the modular desk components can be adapted to the latest requirements at any time.
- Occupational safety and security are implemented according to the latest EU directives and standards for screen workstations.

## Applications / Usage Examples of SAFE DESK

- Conference and training workstations
- Receptions
- Screen workstations in public areas, authorities and libraries
- Dedicated workstations in crisis rooms reserved specifically for this
- Servers and IT workstations
- Fully automated process and monitoring control stations that are not constantly staffed
- Workstations for medical technology



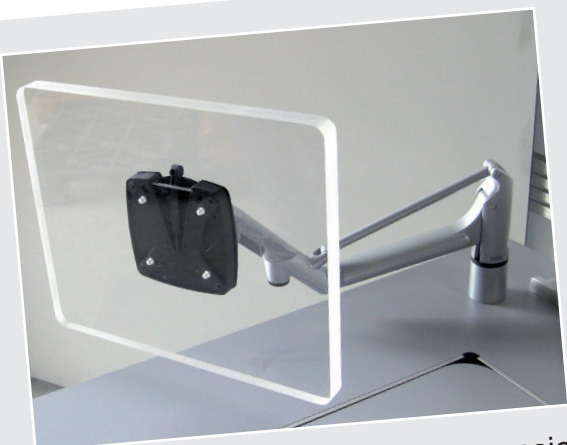
Monitor cover closed

### Monitor cover opened by means of gas springs, SB system

Flat screen swings open with the cover, also adjustable in terms of tilt. Keyboard and mouse can be taken out and placed in the working position. The SB systems holds 15" by 21" monitors fixed with standard VESA adaptor.



Monitor cover open



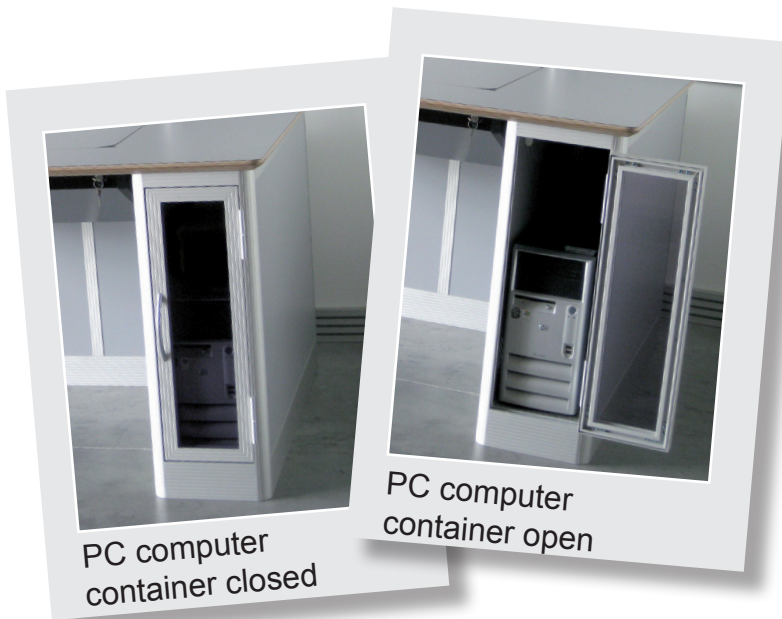
MUC gas pressure monitor suspension

### MUC gas pressure monitor suspension

The newly developed, elegant, aluminium-look monitor suspension offers convenient ease of use with selection of the ideal monitor position.

## Media box

Retractable aluminium housing with power and data connections. Example: 2x Schuko, 2x RJ 45 – many connection variants available.



## PC computer container (left image)

Front locked with acrylic glass doors, perforated grid base as PC space, sidewall with ventilation slits

## PC computer container (right image)

with acrylic glass doors open

## Substructure cladding closed (left image)

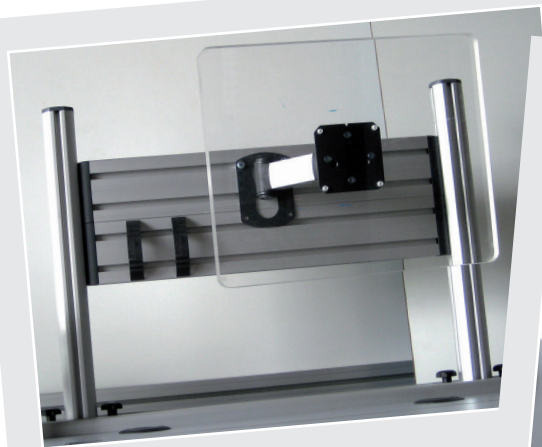
The closed substructure cladding protects the complete cable management and CPUZs, power supply units, distributors etc.

## Substructure cladding open (right image)

The substructure cladding opened with quick release fasteners shows how easy it is to remove the cladding walls for the purposes of revision.







Monitor mounting -  
MUC-System



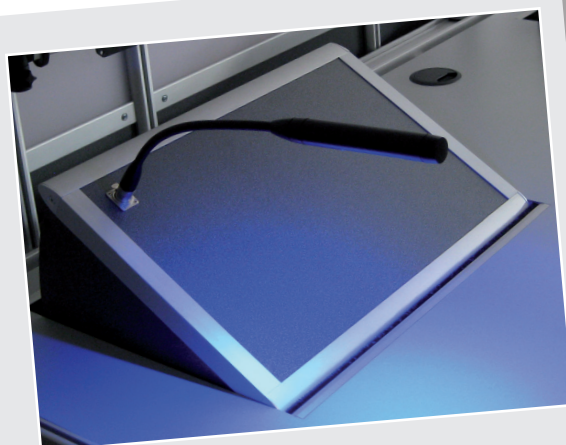
Detail, MUC - piller for  
C-aluchannel

## MUC monitor suspension system

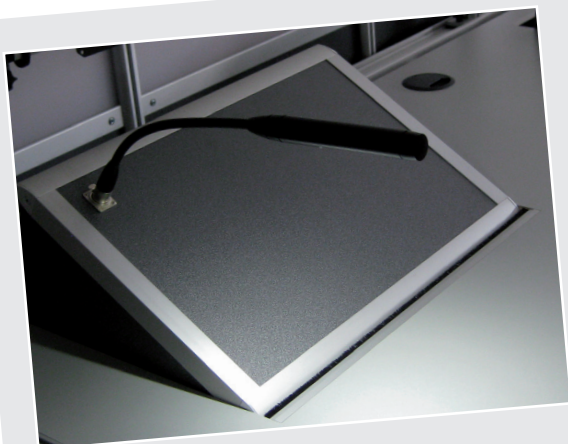
This aluminium sliding profile mounted on the end of the desk allows monitor suspension systems to be moved horizontally without the use of tools. Optimum conditions for positioning your monitor correctly.

## AAW1 LED flex light

dimnable on the lamp head, with white light,  
black aluminium housing, length 550 - 600 mm.  
Inc. power pack and mounting flange



LED flex light, blue light



LED flex light, withe light

## AAWI LED flex light

dimnable on the lamp head, switched to blue  
light, black aluminium housing,  
length 550 - 600 mm.  
Inc. power pack and mounting flange