

COM-DESK

TOMORROW'S COMMUNICATIONS FURNITURE



COM-DESK stands for advanced, modular, technical workstation systems designed for the challenging and multimedia-based requirements of state-of-the-art communications interfaces.

TECHNICAL FURNITURE SOLUTIONS



24/7 PROFESSIONAL QUALITY
MODULAR STRUCTURE
CLEVER ERGONOMICS
CUSTOMIZED DESIGN

The workstation furniture we produce is installed worldwide. Rely on our experience in planning, developing and designing CCTV control rooms, observation points, concierge suites and alarm receiving centres. The close collaboration with our customers guarantees a high level of planning security and well thought-out solutions, even for the most exacting individual projects.



COM-DESK

IN OPERATION

Operations alarm: Tension and concentration reach their absolute maximum. Having all relevant data immediately at hand. Staying in control. Bringing the workstation into standing position at lightning speed. You can control the operation more easily from a standing position. The work situation in a control centre, security centre or control room can change from one second to the next. Operators must be able to react at once. For this, Ehmk, Schmid offer sophisticated technical furniture solutions.



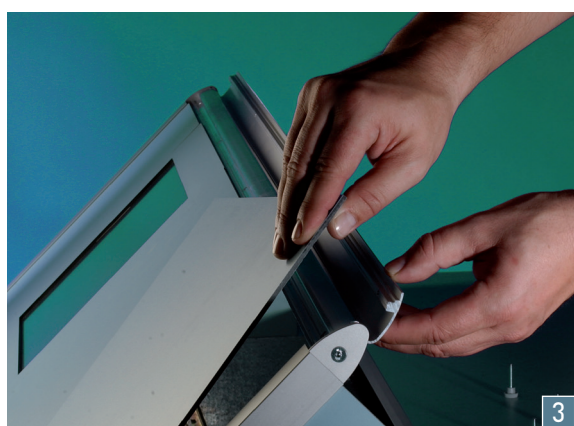
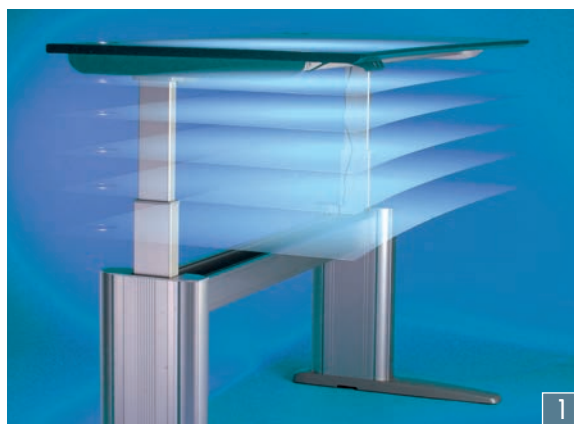
COM-DESK STANDING POSITION



COM-DESK SITTING POSITION

Industrial psychologists know exactly how important it is for operators to be able to actively react in such stressful situations. COM-DESK workstations can be brought from a sitting into a standing position in only a matter of seconds. Standing, operators can accomplish their duties more easily, dissolve stress blockades and expertly manage operation processes and communication workflows. The workstations by Ehmk, Schmid offer outstanding flexibility for all kinds of special situations.

COM-DESK



- STAND-UP / SIT WORKSTATIONS
- INDIVIDUALLY ADJUSTABLE TILT MECHANISM
- DIMMABLE FOOTWELL LIGHTING
- EXCHANGEABLE FRONT PANELS
- MAXIMUM FLEXIBILITY FOR MONITOR POSITIONS

Many of the technical details included in COM-DESK, such as the desk-tilting mechanism and the flexibly adjustable monitor mounting system DS-Rail are innovations developed by Ehmki, Schmid, for which we have filed patents. In COM-DESK, experience, functionality, standardised ergonomics and state-of-the-art design are successfully merged.

An infinitely variable electric motor is used to convert the entire workstation from a sitting to a standing-position workstation in just a few seconds **1**. The individually adjustable tilt of the console **2** makes all operating equipment accessible to the control room personnel at the most comfortable position. In addition, glare-free work at a touch panel is guaranteed. The front panels are integrated into an interchangeable frame without being screwed, thus allowing for tool-free panel exchange **3**. In a DS-Rail set-up, every monitor remains fully adjustable in every dimension both in position as well as orientation, thus offering unsurpassed flexibility to the user. Please ask us also for our electric motor operated DS-Rail systems **4**.



ENERGETIC WORKING



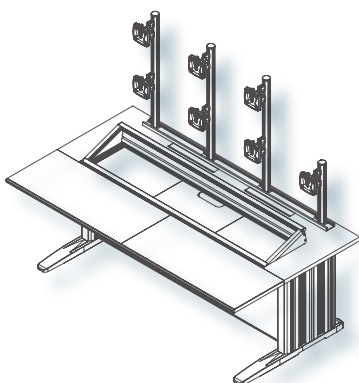
The RGB-LED footwell lighting **5** enables clear orientation in the room even when the ceiling illumination has been dimmed. Operating personnel finds the gentle illumination, which is also recommended by occupational physicians and colour psychologists, very pleasant.

- FUNCTIONAL AND FLEXIBLE
- ERGONOMICAL ACCORDING TO DIN EN 527-1
- 3D-CAD PLANNING SERVICE
- TRANSPORT & ASSEMBLY EVERYWHERE IN THE WORLD

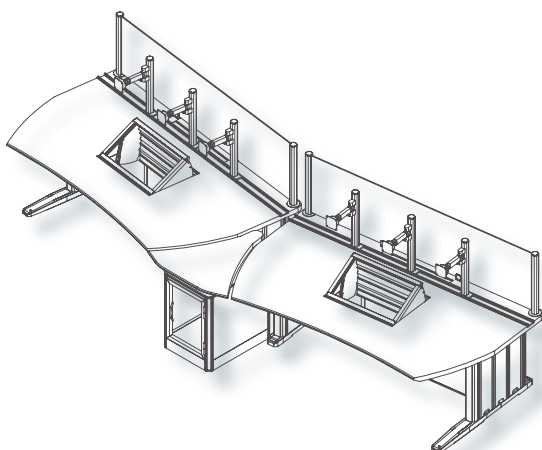


MODULAR SYSTEM TECHNOLOGY

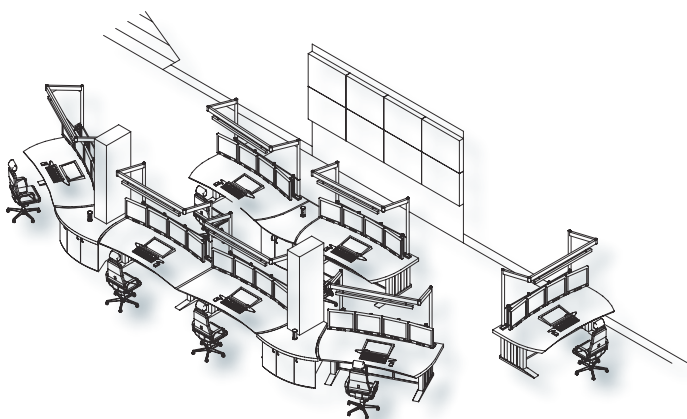
Single workstation



Double workstation



Team workstation



With the modular COM-DESK workstations you can configure any kind of layout.



35 YEARS
OF COMPETENCE

ISO
9001

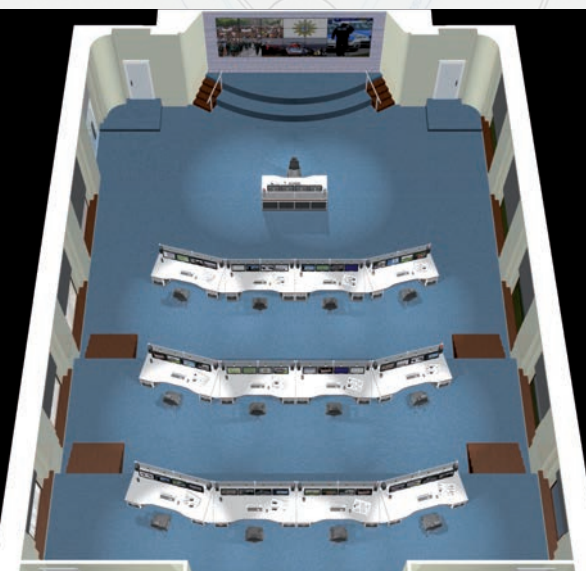


THE
CONSOLE
COMPANY

EXPERIENCE ERGONOMICS



YouTube



TOMORROW'S COMMUNICATIONS FURNITURE



COM-DESK